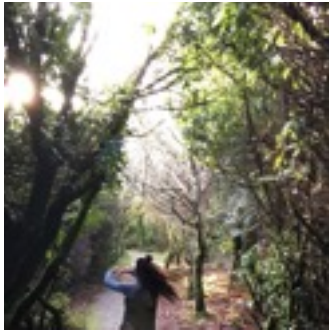




SpinDrift Dance Collective
Last Art, Last Activity

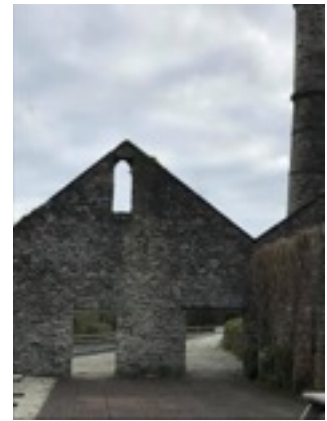


'Clay Walks'

Twilight CPD Monday 26th February

1- 4.30pm Wheal Martyn

An adventure in heritage, community and performance through dance & story telling. A joint offer to primary, secondary, college teachers and local arts practitioners from local professionals SpinDrift Dance Collective and the inspirational Wheal Martyn Museum.



This twilight has been designed to bring collaborating schools and practitioners together so that creative ideas and responses to the site can initiate our collective plans. Suzie West, the director of the project wants all of you to co- author Clay Walks, and is excited to be bringing so many fantastic groups, creative minds, teachers and performers from Cornwall together

1.00-1.10pm - Welcome and overview Suzie West and Gemma Martin

1.10-2.30pm - Guided tour of Wheal Martyn clay works with Tim Trevena and Gemma Martin

Tea and coffee will be available

2.30-3.30pm- Site specific Workshop with Sally Knight from Cscape - working with some of the outdoor spaces to learn how to use site as a starting point for creative tasks, to develop atmosphere, audience interaction and effective placement.

3.30-3.45pm- Workshop with Gemma – working with archive images, the museum collection and Wheal Martyn's heritage to inspire writing

3.45-4.30pm - Discussion of ideas, themes, dates for the diary.

Cornwall
museums
Partnership



Supported by
ARTS COUNCIL
ENGLAND





SpinDrift Dance Collective:
Local artists. Local creativity.



We can't wait to have you there for the afternoon!

- Please bring water proof and warm clothing for the tour and Sally's workshop. You will not be dancing with Sally, but please bring clothes that are comfortable to walk and explore outdoor spaces in. Sally may email you before the workshop with some you tube clips of Cscapes work, but if you would like to find ut more please take a look at Cscape on You Tube or click this hyperlink. <https://www.youtube.com/channel/UCezhdLU9yMJG9UXImWZ78oA/videos>
- Bring your diary so that you can discuss good times to attend the project.
- There are currently road works in St Austell and diversion signs in place for Wheal Martyn. Follow the yellow diversion signs rather than your Sat Nav if you are travelling from Truro or through St Austell town.
- Please confirm who will be attending by emailing either Gemma or Suzie.

Suzie West from SpinDrift Dance Collective on suziespindrift@yahoo.co.uk Mob: 07532361267

Gemma Martin at Wheal Martyn on gmartin@wheal.martyn.com Tel: 01726 850362

Find Wheal Martyn.

Sat Nav: PL26 8XG

Wheal Martyn is located in the village of Carthew, between St. Austell and Bugle on the B3274, 2 miles north of St Austell and 6 miles from the Innis Downs junction on the A30 dual carriageway.



You'll find Wheal Martyn on the B3274 between St Austell & Roche.

Call: 01726 850362



Travelling from the west on the A390 from the Truro direction

As you approach St Austell, turn left signposted Town Centre/brown sign for China Clay Country Park. At the traffic lights go straight across onto the B3274 (Truro Road). At the next traffic lights go straight across and follow the road around a tight left hand bend. Continue on the B3274 (Bodmin Road) past a car park on your right for 2 miles through Trethowel and Ruddle Moor. The Country Park will be on your left in the village of Carthew.

Travelling from the east on the A390 from the Plymouth direction

At the traffic lights, turn right signposted Bodmin A391 (A30). Take the second exit at each of the four roundabouts on this 1.9 mile climb. After 0.6 miles, at the double mini roundabout (Carludon) take the first exit signposted Bodmin A391 (A30). After 1 mile, at the roundabout (Singlerose) take the first exit signposted Carthew B3274. After 1 mile, the Country Park is on the right.

Travelling on the A3058 from the Newquay direction

At the traffic lights turn left onto the B3274 (Truro Road). At the next traffic lights go straight across and follow the road around a tight left hand bend. Continue on the B3274 (Bodmin Road) past a car park on your right for 2 miles through Trethowel and Ruddle Moor. The Country Park will be on your left in the village of Carthew.

Travelling on the B3273 from the Pentewan/Mevagissey direction

Turn left at the large roundabout signposted Truro A390. Turn right at the junction onto the A3058. At the traffic lights turn right onto the B3274 (Truro Road). At the next traffic lights go straight across and follow the road around a tight left hand bend. Continue on the B3274 (Bodmin Road) past a car park on your right for 2 miles through Trethowel and Ruddle Moor. The Country Park will be on your left in the village of Carthew.

Travelling from the north or south on the A30

Turn off at the Victoria junction, following signs for Roche. At the mini roundabout in Roche, take the first exit onto the B3274. Go straight across the next mini roundabout and continue for 2.3 miles. At the next roundabout, take the third exit signposted Carthew. After 1 mile, the Country Park is on the right.